

Port Bundaberg reaches a milestone of 50 years in 2008

Today Bundaberg Port and Marina Complex portrays a thriving facade which will move progressively into the future, the result of long term vision, a strong resource for the region.

Prior to 1956 the Port complex area portrayed a differing image, one of rural living where the Burnett River meandered to meet the sea. Shipping was guided through The Heads, by the original South Heads Lighthouse built in 1873, as they steered to the wharves in the upper reaches of the River. The wharves were located where the Mid Town Marina is now sited. Among other cargo handled at the wharves, sugar contained in bags made from jute were loaded by manual labour. Following floods of July 1954 the then Bundaberg Harbour Board decided to press for the stabilization of navigational channels at Burnett Heads and dredging of channels to a minimum of 18 feet. Bulk sugar handling at this time was receiving serious consideration by the sugar industry of Queensland prompting the Harbour Board to press for the establishment of a bulk sugar terminal for Bundaberg.

This matter eventually received executive approval early in 1956 and by December 1956 tenders had been accepted and finalised for the construction of a road, training wall and dredging of channels to establish a Deep Water Port and Bulk Sugar Terminal at the New Bundaberg site. Then in January 1957 the first tenders for a bulk sugar handling terminal were finalised.

By 11th July 1958 bulk sugar was received, much had been achieved, the administration building block and houses for administration staff were nearing completion. With commencement of a workshop for the engineering staff other

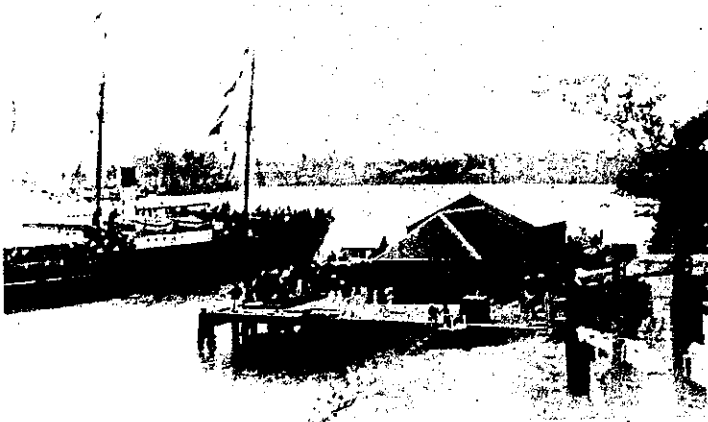
On Saturday 20th September 1958 the Deep Water Port and Bulk Sugar Terminal at New Bundaberg was officially opened by the then Premier of Queensland, the Honourable GFR Nicklin, MM MLA.

The Honourable E. Walsh, MLA Member for Bundaberg had officiated at the Laying of the Foundation Stone and turning of the first sod of soil on the site of New Bundaberg on 26th October 1956.

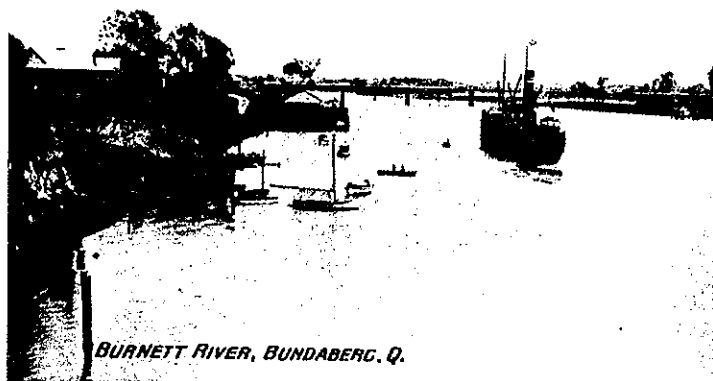
At the 1958 official opening ceremony Mr Walsh commented:--
 'That the establishment of a Port with Bulk Sugar Handling facilities will be justifiably hailed as another step forward in the progress of sea transport link for existing primary and secondary industries but will open the gateway for the expansion and the establishment of many more. In celebrating the opening of the new port, our minds must surely go back to those pioneers who, by their efforts laid a solid foundation for what is widely accepted as one of the most prosperous districts in the State of Queensland'.

Among such pioneers were the Hicks family who operated a cane and dairy farm on land which now occupies the site of the Bulk Sugar Terminal, Storage Sheds and Bundaberg Port Authority buildings.

*Fifty years -- 1958 -- 2008, a proud achievement.
 M.Kidd.*



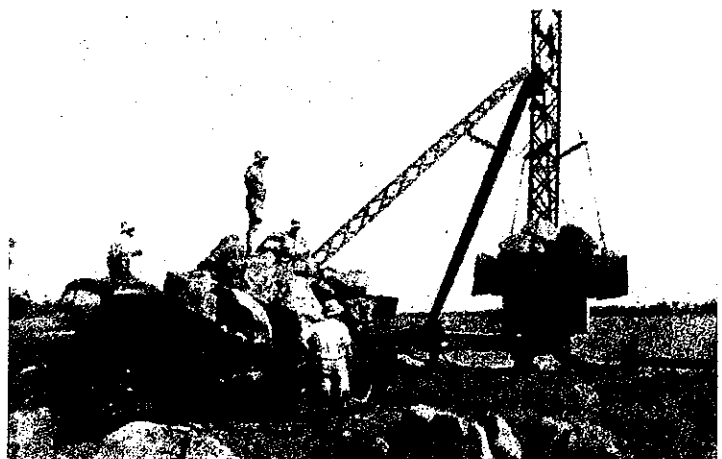
The Wharves, Town Reach of the Burnett river 1883. Historical Society Photo.



The Wharves at the Town Reach, 1909. Historical Society photo.



The site of the Port construction process and workers barracks. Photo courtesy of the Strathdee Family.



Loding rocks during the construction of the retaining walls during the Port construction. Photos courtesy of the Strathdee Family